

Ultra small, ultra light.  
Fully cableless ultrasound device.  
Easy to carry, stress free.



## Mobile Ultrasound Imaging Solution

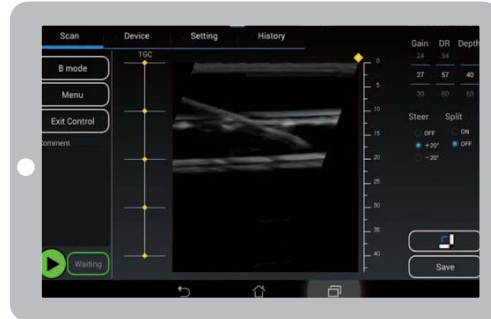
view phi™ US

US...ultrasound

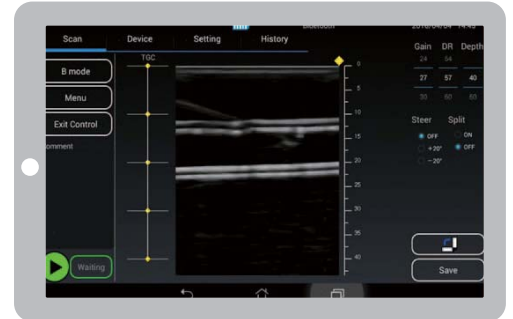
- Ultra light, only 150g
- Possible to use for 1 working day with a fully charged device (continuous operation time of a fully charged device: over 5 hours)
- Fast start-up, easy to use

## Use cases

- Visualization of blood vessel and blood vessel puncture
- Visualization of soft tissue
- Biopsy
- Nerve block
- Supporting informed consent at doctor's office
- At ambulances and air-ambulances
- Telemedicine, home medical care



Needle enhance / ON



Needle enhance / OFF



- Socionext offers medical and healthcare related core technologies, reference devices, reference solutions to business partners.
- Socionext is also interested in new business development, technologies, seeds and service collaborations with companies and academic groups.

## Specifications



Main unit	
Size (H*W*D):	136 * 74 * 24 mm
Weight:	150g
Built-in battery:	Lithium Battery
Battery operation time:	5 hours ( continuous operations time)
Charging method:	USB charging
Wireless:	IEEE 802.15.1
Display mode:	B mode, M mode
Scanning method:	6MHz/ linear
Measurement area:	Width 37 mm x Depth 70 mm

Tablet PC	
OS:	Android 5.0
Resolution:	1,280 x 800
Cloud connection	WiFi / 3G / LTE etc.

The system LSI businesses of Fujitsu Limited and Panasonic Corporation were incorporated as Socionext Inc. in 2015.

viewphi is a trademark of Socionext Inc.

The Products and product specifications described in this document are subject to change without notice for modification and/or improvement. At the final stage of your design, purchasing, or use of the products, therefore, ask for the most up-to-date Product Standards in advance to make sure that the latest specifications satisfy your requirements. All company names, brand names and trademarks herein are property of their respective owners.

## Socionext Inc.

Nomura Shin-Yokohama Bldg.,  
2-10-23 Shin-Yokohama,  
Kohoku-ku, Yokohama, Kanagawa, 222-0033, Japan  
Tel. +81-45-568-1015  
<http://socionext.com>